

PSYC4481: RESEARCH PRACTICUM IN BEHAVIORAL NEUROSCIENCE
Behavioral Scoring Lab

Name: _____

CD #: _____

OBJECTIVE:

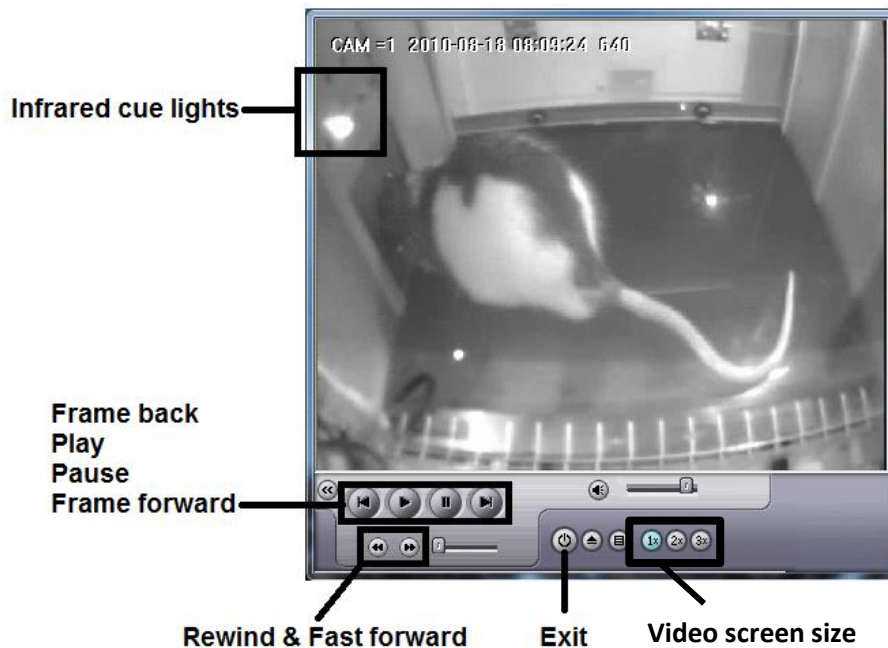
Gain experience scoring behavioral videos from real experiments for two different types of behavior. Compile data as a class. Discuss experimental design and results.

NOTE:

DO NOT COPY OR KEEP VIDEOS. DISCS MUST BE RETURNED!

BASICS:

You will make and record behavioral observations every 1.25 seconds by setting the metronome to 48 bpm (<http://a.bestmetronome.com/>).



Record your observations onto the sheets in this packet. Once you've completed your observations, enter you results into the excel sheet at the TF's station.

EXPERIMENT 1: Acquisition of Appetitive Pavlovian Conditioning

In this study male rats received 1 or 10 ~32min training sessions. For half of the rats (conditioned group, "Paired"), these training sessions consisted of eight presentations of a 10 sec tone, each of which were immediately followed by delivery of food pellets into a food cup. For the other half of the rats (control group, "Tone"), the sessions consisted of the same number of tone presentations as the Paired group but no food was delivered.

We are interested in what rats do when they hear the tone during both early (session 1) and late (session 10) learning. To investigate this you will be watching videos of rats during their first or last training session. You will be scoring "food cup behavior". Food cup behavior is characterized as nose pokes into the recessed food cup, and standing in front of and facing the food cup. You will be scoring what rats are doing both before and during the tone.

When to score:

- Pre-CS Period
 - For the 10 sec preceding each tone.
 - Infrared cue light closest to the camera will be illuminated.
- CS Period
 - During the 10 sec tone.
 - Infrared cue light furthest from the camera will be illuminated.

Independent Variable: _____

Dependent Variable: _____

Between-Subjects Factor(s): _____

Within-Subjects Factor(s): _____

Hypothesis:

Class Results:

Experiment 1: Cue Induced Eating

Scoring every 1.25 seconds

Rat ID: ACQ Session 1

	1	2	3	4	5	6	7	8	Tot.
Pre-CS1									
Pre-CS2									
Pre-CS3									
Pre-CS4									
Pre-CS5									
Pre-CS6									
Pre-CS7									
Pre-CS8									

	1	2	3	4	5	6	7	8	Tot.
CS1									
CS2									
CS3									
CS4									
CS5									
CS6									
CS7									
CS8									

Rat ID: ACQ Session 10

	1	2	3	4	5	6	7	8	Tot.
Pre-CS1									
Pre-CS2									
Pre-CS3									
Pre-CS4									
Pre-CS5									
Pre-CS6									
Pre-CS7									
Pre-CS8									

	1	2	3	4	5	6	7	8	Tot.
CS1									
CS2									
CS3									
CS4									
CS5									
CS6									
CS7									
CS8									

EXPERIMENT 2: Tone-Cue Inhibition of Eating

In this study male and female rats received two types of training sessions that occurred in two distinct contexts. During the “appetitive” sessions all rats were given food pellets. During the “aversive” sessions half of the male and female rats received 2 mild footshocks each signaled by a 60 sec tone (conditioned groups), while the other half of the rats received only the tones (control groups).

We are interested in what rats do when they hear the tone while in the appetitive context during extinction tests when no footshocks are delivered. To investigate this you will be watching videos of rats during extinction tests 1 & 3. Each of these tests are 10 min long, and there are four 60 sec tone presentations during each test. You will be scoring “freezing behavior”. Freezing behavior means complete absence of movement – however, you may observe chest movement due to heavy breathing. Freezing is, and looks, very different from being still due to boredom or sleeping. You will be scoring what rats are doing during each tone presentation.

When to score:

- CS Period
 - During each 60 sec tone. Tones occur at the 1, 3, 5, & 7 min marks.
 - Infrared cue light furthest from the camera is illuminated during the tone.
- **NOTE:** Infrared cue light closest to camera is illuminated before & after the tone—**DO NOT SCORE DURING THESE TIMES.**

Independent Variable: _____

Dependent Variable: _____

Between-Subjects Factor(s): _____

Within-Subjects Factor(s): _____

Hypothesis:

Class Results:

